

Installation Instructions

03-0203 SpeedyMoto Ducati 748/916-998 Triple Clamp

Parts included

1. One very special SpeedyMoto triple clamp
2. One very special SpeedyMoto steering damper extension (Fitted)
3. Two stainless M8 x 18 mm Allen head bolts (Fitted)
4. One stainless M8 x 30 mm Allen head bolt (Fitted)
5. Two stainless M6 x 18 mm Allen head bolt
6. One o-ring
7. One M6 stainless washer
8. One 5mm spacer

Tools required

1. 6mm Allen wrench
2. 5mm Allen wrench
3. Dead-blow mallet
4. Torque wrench

Note:

Additional tools may be required to remove/reinstall your steering damper, depending on the make and model.

Installation

Note:

You may need to temporarily move/remove the brake fluid and clutch fluid reservoirs to install your new SpeedyMoto triple clamp.

1. Remove your current steering damper, and top triple clamp.

Note:

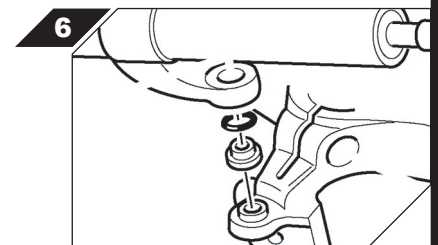
While removing the steering damper mount, note the order in which the spacer/o-ring came off, and be careful not to lose any of these parts as you remove the bolt.

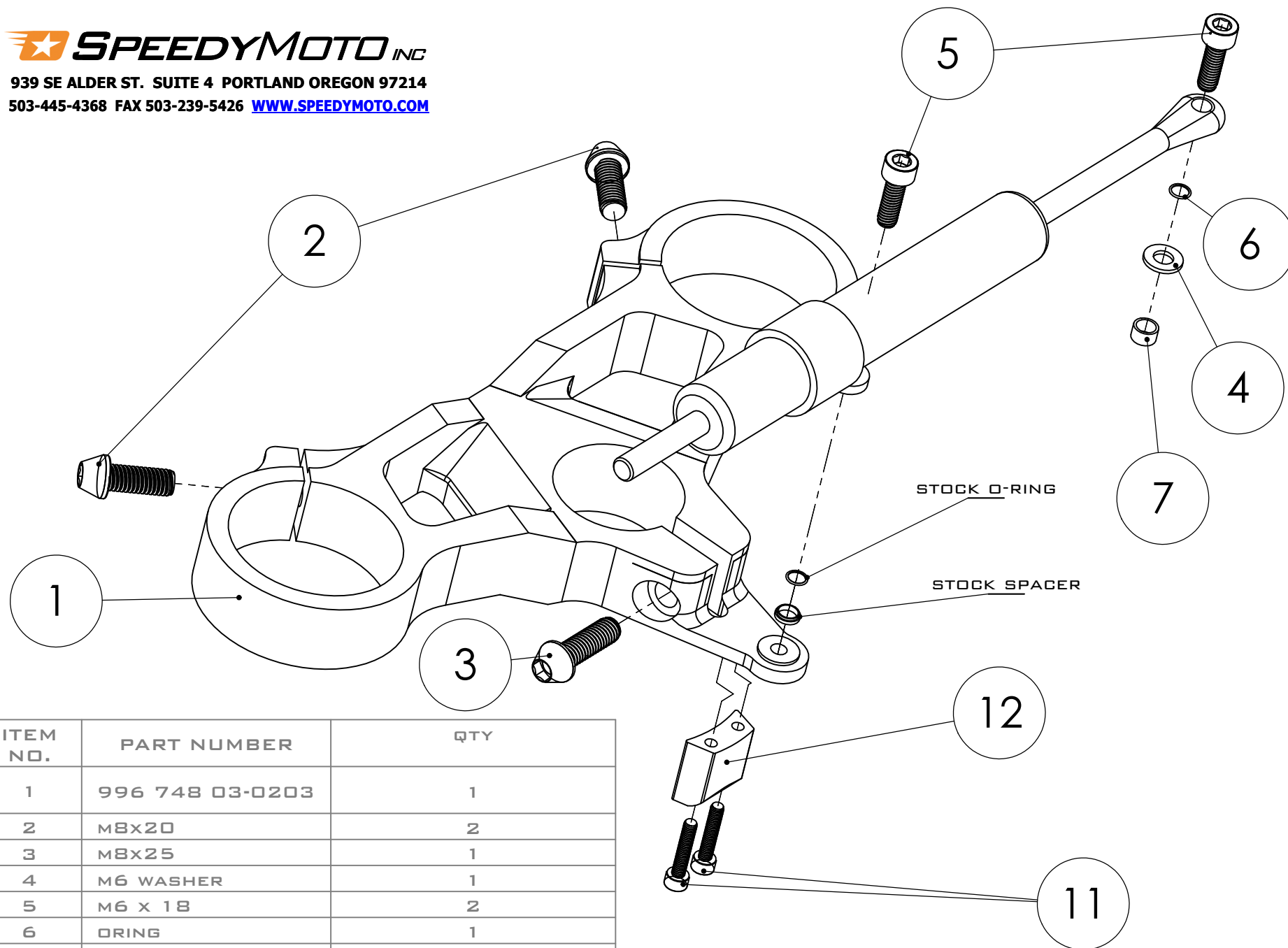
2. Loosen the 3 bolts fitted to your new SpeedyMoto triple clamp.
3. Align and place your new triple into place.
4. Tap triple clamp evenly until the the clamp seats firmly on the steering stem.
5. Torque all 3 bolts to 14 Nm (~10.5 Ft. Lbs.)
6. Reinstall your steering damper mount using one of the SpeedyMoto provided M6 x 18mm bolts, and the stock damper spacer/o-ring, making sure they go back on in the correct order.
7. Reinstall the steering damper into the mount.
8. Reattach the free end of the damper to the boss on the frame, using the other SpeedyMoto provided M6 x 18mm bolt, then o-ring, washer, and spacer--in that order.

Note:

The provided o-ring and washer may not fit all makes and models of steering dampers.

9. Reinstall/tighten brake fluid and clutch fluid reservoirs, if needed.
10. Ride it, and tell all your friends about SpeedyMoto!





ITEM NO.	PART NUMBER	QTY
1	996 748 03-0203	1
2	M8X20	2
3	M8X25	1
4	M6 WASHER	1
5	M6 X 18	2
6	ORING	1
7	SPACER	1
11	M4 X 20	2
12	996 LOCK	1